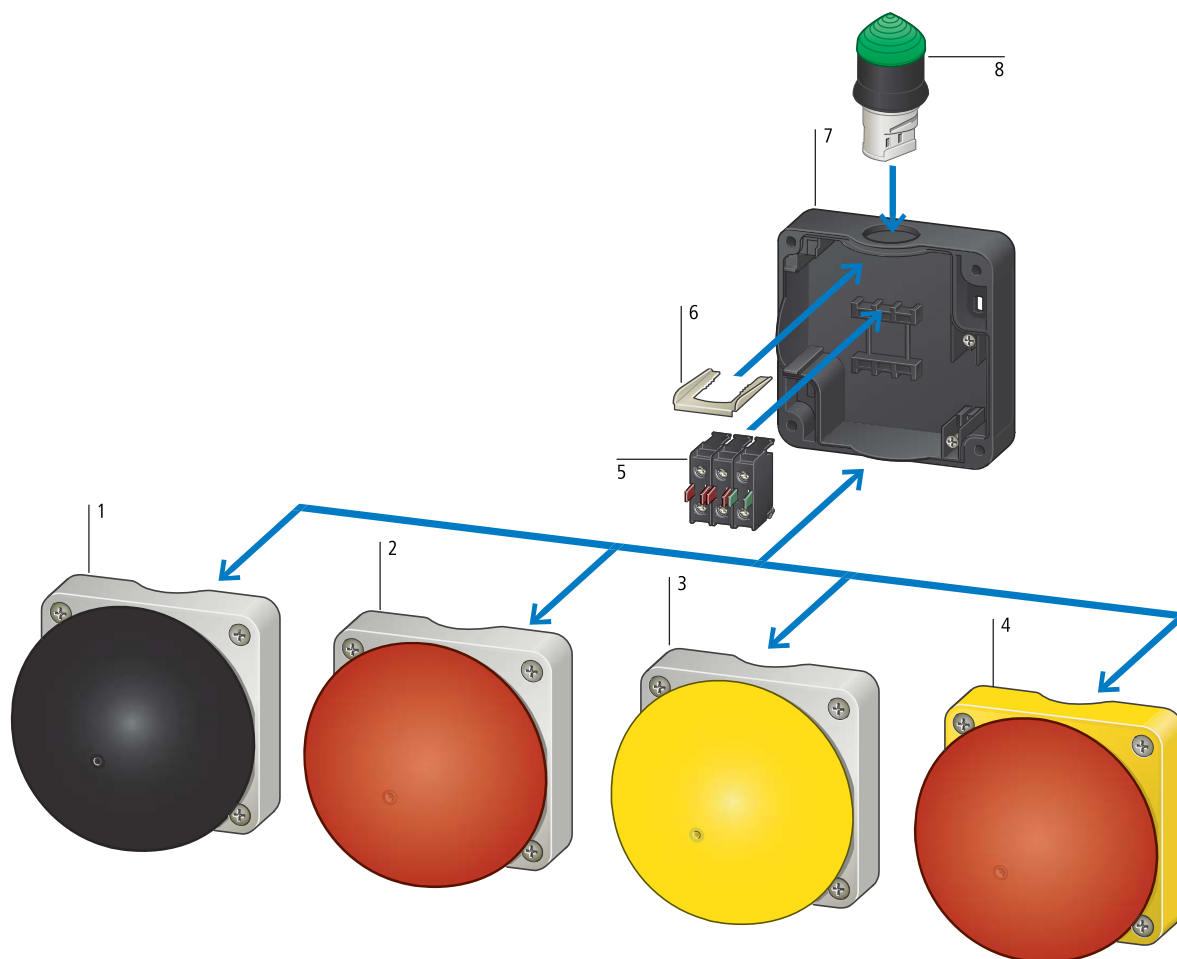




**System overview**



**Enclosure base 7**

- Prepared for contact elements
- Base fixing (not for ...SMC... contacts)
- Page 2/78

**Operator only with mushroom head 1, 2, 3, 4**

- Various color combinations
- Yellow/red for Emergency stop or emergency switching off applications
- European Machinery Safety Directive 2006/42/EC
- For foot or hand operation
- Page 2/78

**Contact elements 5**

- Base fixing
- Page 2/31

**Indicator lights 6, 8**

- Conical
- BA9s base
- Page 2/26





## Technical data

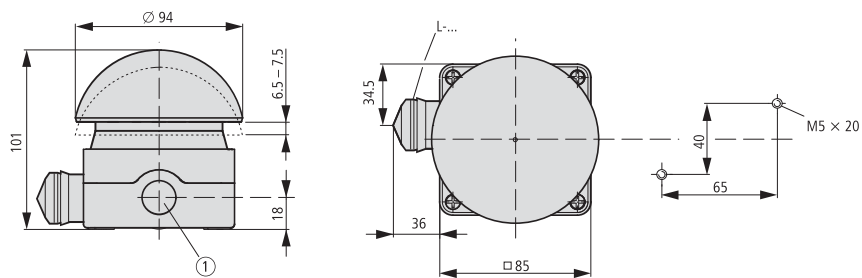
			FAK foot and palm switch		FAK-R/V/KC11A/I
			Momentary	Maintained	Maintained
<b>General</b>					
Standards			IEC/EN 60947, VDE 0660	IEC/EN 60947, VDE 0660	IEC/EN 60947, VDE 0660
Lifespan, mechanical	Operations	x 10 <sup>6</sup>	1	0.1	0.1
Operating frequency	Operations/h		≤ 3600	≤ 600	≤ 600
Actuating force		N	20 - 40	40 - 60	15 - 25
Operating torque		Nm	–	–	–
Protection type, IEC/EN 60529			IP67, IP69K	IP67, IP69K	IP65
Climatic proofing			Damp heat, constant, to IEC 60068-2-78 Damp heat, cyclic, to IEC 60068-2-30		
Ambient temperature					
Open		°C	-25 - +40	-25 - +40	-25 - +40
Mounting position			Any	Any	Any
Mechanical shock resistance to IEC 60068-2-27 Shock duration 11 ms, half-sinusoidal		g	> 15	> 15	> 15



Dimensions

Foot and palm switch RMQ-Titan

FAK...



3 x M20 (Pg 13.5) lateral  
1 x M16 in the base